



STOCKPORT
METROPOLITAN BOROUGH COUNCIL

PINS Project

Zoe Lamb

Neurodevelopmental Team

Paula Doran

Parents and Carers Together Stockport (PACTS)

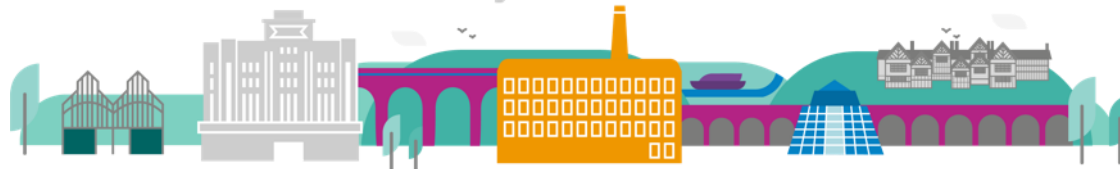


Partnership for Inclusion of Neurodiversity in Schools (PINS)

- National programme with funding from Department for Education and NHS
- Delivered between Sept 24 and Mar 25
- 6 Primary schools in Stockport taking part
- Jointly delivered by the Neurodevelopmental Team, Occupational Therapy, Speech and Language Therapy, Jigsaw, Educational Psychology and Parents and Carers forum PACTS

The programme objectives are as follows:

- To strengthen partnerships between parents, carers and schools.
- To enhance parental awareness of the range of support across the local partnership.
- To enhance schools' confidence and expertise in supporting neurodiversity within their classrooms.
- To further enhance the school environment to address low level needs and allow neurodiverse children to successfully engage in learning.
- To develop an inclusive culture that improves the efficacy of other interventions.



PINS at Bradshaw Hall

- Questionnaires for parents/carers and staff
- Neurodiversity assembly during celebration week in March
- Training workshop for staff – Exploring ND
- Training for parents/carers – Exploring Neurodiversity (25th Feb 6-8.30pm)
- Pupil Voice – School Views
- Occupational Therapy input – sensory environments
- Whole school approaches to mental health and wellbeing
- Consultations with Educational Psychology



Changes to the Autism Team



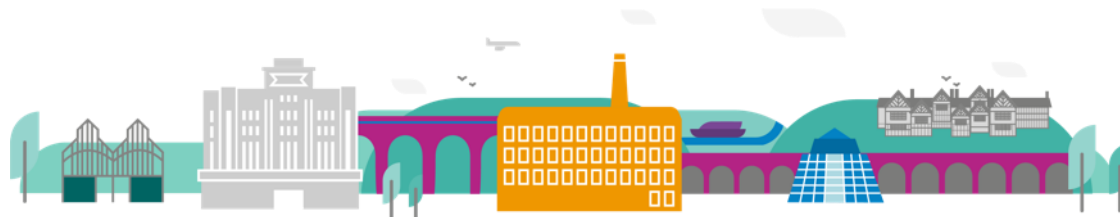
- The Autism Team became the Neurodevelopmental Team in September 2024
- Support available to children pre-diagnosis
- Joint working with Educational Psychology and the Jigsaw Team.

New email address:

NDTeam@stockport.gov.uk

ND Team Offer:

- 'Exploring Neurodiversity' course for parents/carers
- 'Exploring Autism' course
- Partnership for Inclusion of Neurodiversity in Schools (PINS)
- Neurodiversity in Schools Project (NDiS)
- 'Riding the Rapids' 10-week course
- Webinars
- Coffee and Connect sessions



Support for Families

Parents/carers can access lots of information on the new Neurodevelopmental Support Padlet



<https://padlet.com/autismprogrammestockport/stockport-neurodevelopmental-support-for-children-young-peop-vsray0kgugoivc6g>

Support for Families

- Parents/carers and family members are invited to attend 'Coffee & Connect' sessions.
- Informal drop-in sessions, no need to book.
- Representatives from the Neurodevelopmental Team, Jigsaw (mental health support) and Educational Psychology will be there to offer information and advice.
- Opportunity to meet other parents/carers.

Drop in to one of our

Coffee & Connect Sessions

at our One Stockport Family Hubs

ONESTOCKPORT
Family Hubs



Are you a parent or carer of a neurodivergent child or young person, or are you a parent or carer of a child with SEND looking for information or advice?

Come along and have a chat with colleagues from our multi-disciplinary team which includes representatives from Educational Psychology, Primary Jigsaw, Secondary Jigsaw, Neurodevelopmental Team, Children's Therapy Services, and Hearing and Vision Service

No formal diagnosis required

UPCOMING DATES

WEDNESDAY 22ND JANUARY 09:30-12:30

WESTMORELAND DRIVE FAMILY HUB
1-11 WESTMORLAND DRIVE, BRINNINGTON, SK5 8HH
what3words sleep.cost.minute

TUESDAY 11TH FEBRUARY 09:30-12:30

WESTMORELAND DRIVE FAMILY HUB
1-11 WESTMORLAND DRIVE, BRINNINGTON, SK5 8HH
what3words sleep.cost.minute

THURSDAY 27TH MARCH 09:30-12:30

ABINGDON ROAD FAMILY HUB
3 ABINGDON ROAD, REDDISH, SK5 7EU
what3words fonts.notice.school



Refreshments will be provided

If you would like further information about the sessions, please contact:

ndteam@stockport.gov.uk